

Customization Tools – Solomon

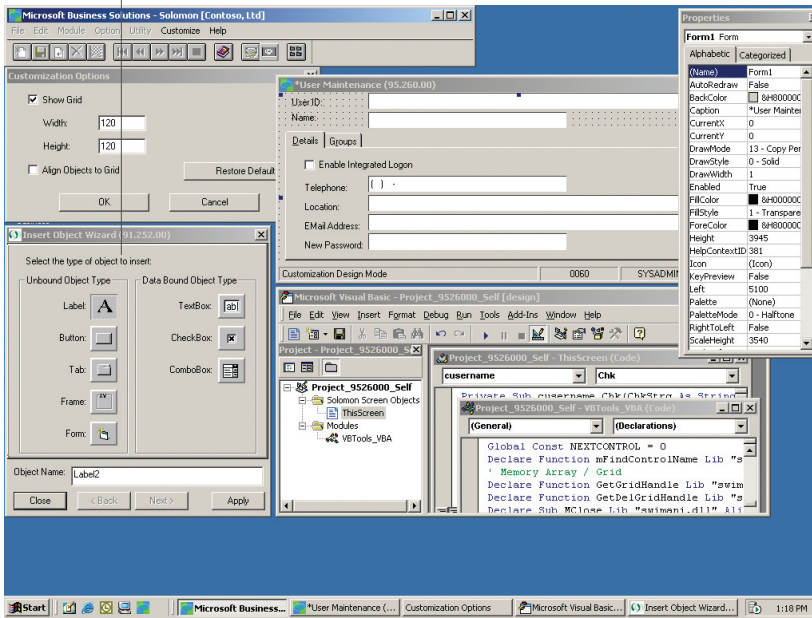


Adapt your system to the specific requirements of your organization with Microsoft® Business Solutions–Solomon Customization Manager. Quickly and easily modify any screen in any Microsoft Solomon module without changing the underlying source code, and update screens as often as necessary to match the pace of your business growth.

B E N E F I T S

CUSTOMIZATION MANAGER

Inserting
new objects is a snap with
the Insert Object Wizard.



Work the way you want

Add new fields and controls, hide data items, set defaults, change field captions, and much more. Screens are instantly updated so you see the results of your changes immediately across your entire company.

Seamlessly integrate custom solutions

Attach custom programs and specific business rules to any object in any screen. Customization Manager includes Microsoft Visual Basic® for Applications, which you can use for sophisticated customization capabilities such as enhanced calculations, table lookups, validations, and references to most Microsoft Solomon fields.

Tailor your solution

Create screens with Tools for Visual Basic and incorporate them as objects with the Microsoft Solomon Object Model—an innovative programmatic interface. The Object Model lets you automate any Microsoft Solomon screen, whether standard or created by you, helping ensure data integrity by leveraging the screens' business logic.

Alter processes and functionality

Adjust field colors, screen fonts, and the assignment of tool tips with the Customization Manager property window, consistent with other form-oriented design tools such as Visual Basic or Microsoft Access. Easily see the original, as well as the customized property values for all controls.

Enhance productivity

Assist newer and more advanced users. For example, optimize data entry by rearranging field on the screen to match your business flow or unique document layout. You can create custom Tool Tips to provide additional information, or assign custom keyboard shortcuts for single keystroke operations.

AVAILABLE WITH:

- ✓ SOLOMON
- ✓ SOLOMON STANDARD

CUSTOMIZATION MANAGER | FEATURES AND FUNCTIONALITY

Advanced Customization Capabilities	Attach custom processes to specific “events” with Visual Basic for Applications. Validate an entry in a custom table or enforce a specific rule based on your requirements.
Industry-Standard Integration	Take advantage of industry-standard integration technologies such as Automation and Open Database Connectivity (ODBC) to integrate with off-the-shelf Microsoft Windows® applications and database sources using Visual Basic for Applications.
Data Access and Transfer	Access any ODBC-compliant data source within any Microsoft Solomon screen, including information stored in SQL databases outside the Solomon system. Automate data transfer between products such as Microsoft Office Excel or Microsoft Office Word.
Powerful Security Features	Set up and control access to Customization Manager.
Rights-Based Functionality	Grant functional-level customization rights, such as the ability to change field order and visual appearance, or restrict the ability to insert new objects or write code.
Field-Level Security	Define field-level security—such as making a balance field invisible to some users—or define a more restrictive range of valid entries.
Customization Control	System administrators can make screen changes that apply to all users, one user, or that apply only to themselves; individuals can customize their own screens.
Flexible Import and Export	Copy customizations from one system to another. Easily manage libraries of customizations, control deployment within your organization, or merge new customizations with existing ones.
Customization Packaging and Distribution	Create packaged customizations for import to other sites. For example, an administrator who wants to repeat a series of customizations at multiple sites can package and distribute them to those sites.
Industry-Specific Customizations	Create customizations for a specific industry, such as one that refers to “Vendors” as “Suppliers,” and all “Vendor ID” labels will be changed to “Supplier ID.” Customizations can be exported as a package for re-sale.
Insert Object Wizard	Capture additional information in certain Microsoft Solomon screens by adding data fields—without requiring the help of a programmer. The Insert Object Wizard allows you to quickly and easily insert new objects on a screen.
Security-Enhanced Customizations	All customizations are stored in the Microsoft SQL Server™ database. This helps ensure that customizations are protected, deployed across the entire system instantly, and allows easier migration to future versions.